

CRL Standoff Installation Steps

STEP1



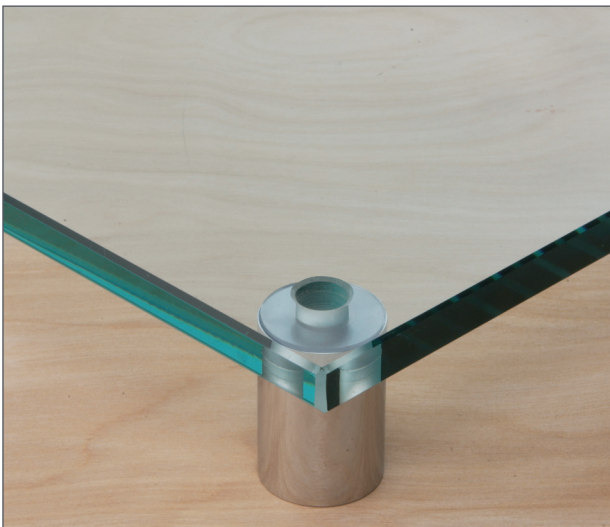
Set Fastener to Surface

STEP2



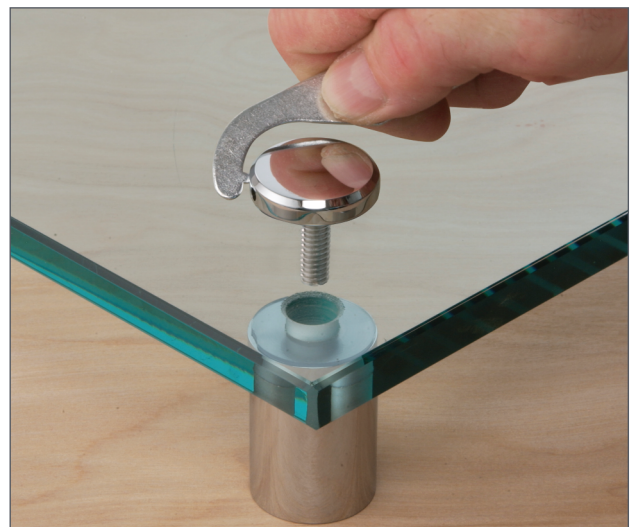
Thread Base Onto Fastener

STEP3



Align Glass on Standoff

STEP4



Tighten Cap with Wrench

(For 3/4" to 1-1/4" Diameter Standoffs use Cat. No. SOW Wrench. For 1-1/2" to 2" Diameter Standoffs use Cat. No. SSW12 Wrench).

NOTE: Due to the diversity of applications, weight limitations for Standoff Systems are dependent upon wall or substrate anchoring and material strengths.